

Printing Workflow Instructions For Applying Custom ICC Profiles for Printing on KODAK PROFESSIONAL Inkjet Photo Paper

(Suitable for PHOTOSHOP ELEMENTS Software Version 2 and 3 on WINDOWS 2000/XP Operating Systems)

This document provides instructions to create a reliable workflow for printing images on KODAK PROFESSIONAL Inkjet Photo Paper with optimized, custom ICC profiles developed by Kodak's color scientists. The information in these instructions assumes that users possess a working knowledge of ADOBE PHOTOSHOP ELEMENTS Software and have a basic familiarity with the principles of color management. ADOBE product support and additional background information are available from Adobe's software manuals and website.

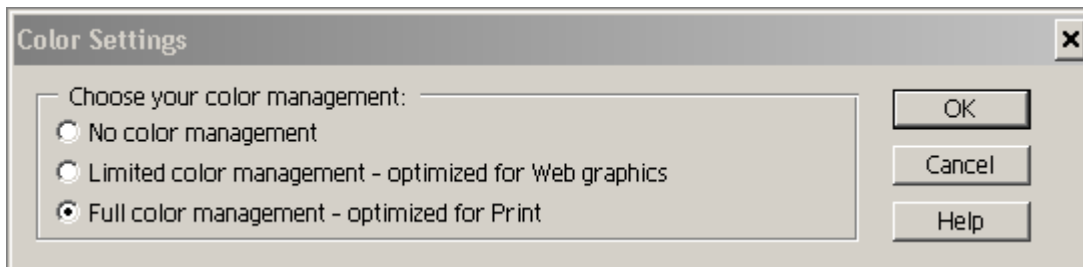
These instructions apply in general to all printers supported by Kodak through these custom ICC profiles, and assume that users have a working knowledge of printer driver software. Printer product support is available from your printer's user manual or from the printer manufacturer's website.

Kodak provides custom profiles for its KODAK PROFESSIONAL Inkjet Photo Paper to help ensure optimum color and image quality for its professional and advanced amateur customers. These are output profiles, optimized for specific inkjet printers across a variety of input sources, but should not be expected to correct for all variations in image capture quality and input source profiles.

Step 1: Installing Profiles and Configuring the Color Settings

The first step is to download the ICC profile specific to your printer and KODAK PROFESSIONAL Inkjet Photo Paper. The list of supported printers and the downloadable profiles are found at www.kodak.com/go/proinkjet. For WINDOWS 2000, the downloaded file must be placed in the Winnt/System32/Spool/Drivers/Color folder. For WINDOWS XP, it must be placed in the Windows/System32/Spool/Drivers/Color folder. Once put in the proper place, the profile is now ready to use and will always be available.

After launching the PHOTOSHOP ELEMENTS Software application, you should configure your color settings by selecting **Color Settings...** from the **Edit** drop-down menu. Select **"Full Color Management"** as shown below, and click **OK**.



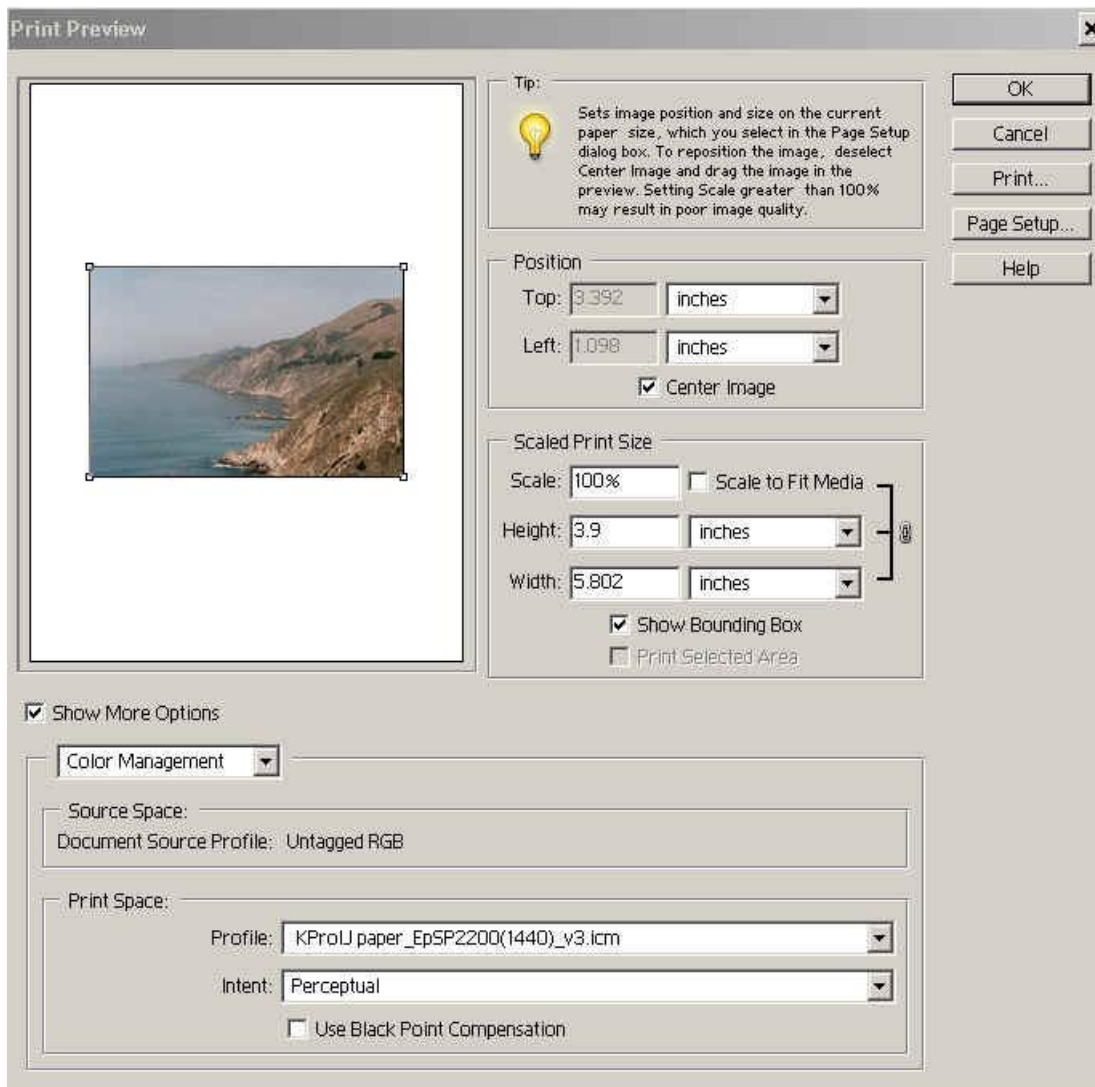
Step 2: Opening and Editing the Image File

The next step is to open your image file using the **File...Open** dialog. Click on **OK** and your file will be opened into PHOTOSHOP ELEMENTS Software. At this point, any resizing, cropping and color editing can be performed on the image.

Step 3: Applying the Printer Driver Settings and Printing

The final step is to print the image. This is done through the **Print with Preview** (or **Ctrl+P**) dialog under the **File** menu. A dialog box similar to the one shown below offers a preview option to rescale and position the image on the page. With the **"Show More Options"** box checked, select **"Color Management"**. In the **Print Space** dialog, select from the **Profile** drop-down list the custom profile for your printer you previously downloaded and installed in Step 1. In this example, the profile shown is for the EPSON Stylus Photo 2200.

Best results are generally obtained using Perceptual rendering intent. For black & white photos, Relative Colorimetric intent is often recommended. **"Black Point Compensation"** should be set to **"Off"**.



Clicking on “Print” and the associated “Setup” or “Properties” dialog will access the printer driver. At this point, the settings and options in the driver should be carefully set to match those also provided for your printer on the same download page of Kodak’s website where you obtained the profile.

Note: The ICC profile provided for KODAK PROFESSIONAL Inkjet Photo Paper and your printer was built for this paper, printer and ink combination, using the printer driver settings supplied with the profile. Failure to set up the driver exactly as recommended for use with this profile will result in non-optimal color and image quality.

After applying the recommended driver settings, click on “Print” to initiate printing.