

Printing Workflow Instructions For Applying Custom ICC Profiles for Printing on KODAK PROFESSIONAL Inkjet Photo Paper

(Suitable for PHOTOSHOP Software Version CS2 on WINDOWS 2000/XP Operating Systems)

This document provides instructions to create a reliable workflow for printing images on KODAK PROFESSIONAL Inkjet Photo Paper with optimized, custom ICC profiles developed by Kodak's color scientists. The information in these instructions assumes that users possess a working knowledge of ADOBE PHOTOSHOP Software and have a basic familiarity with the principles of color management. ADOBE product support and additional background information are available from Adobe's software manuals and website.

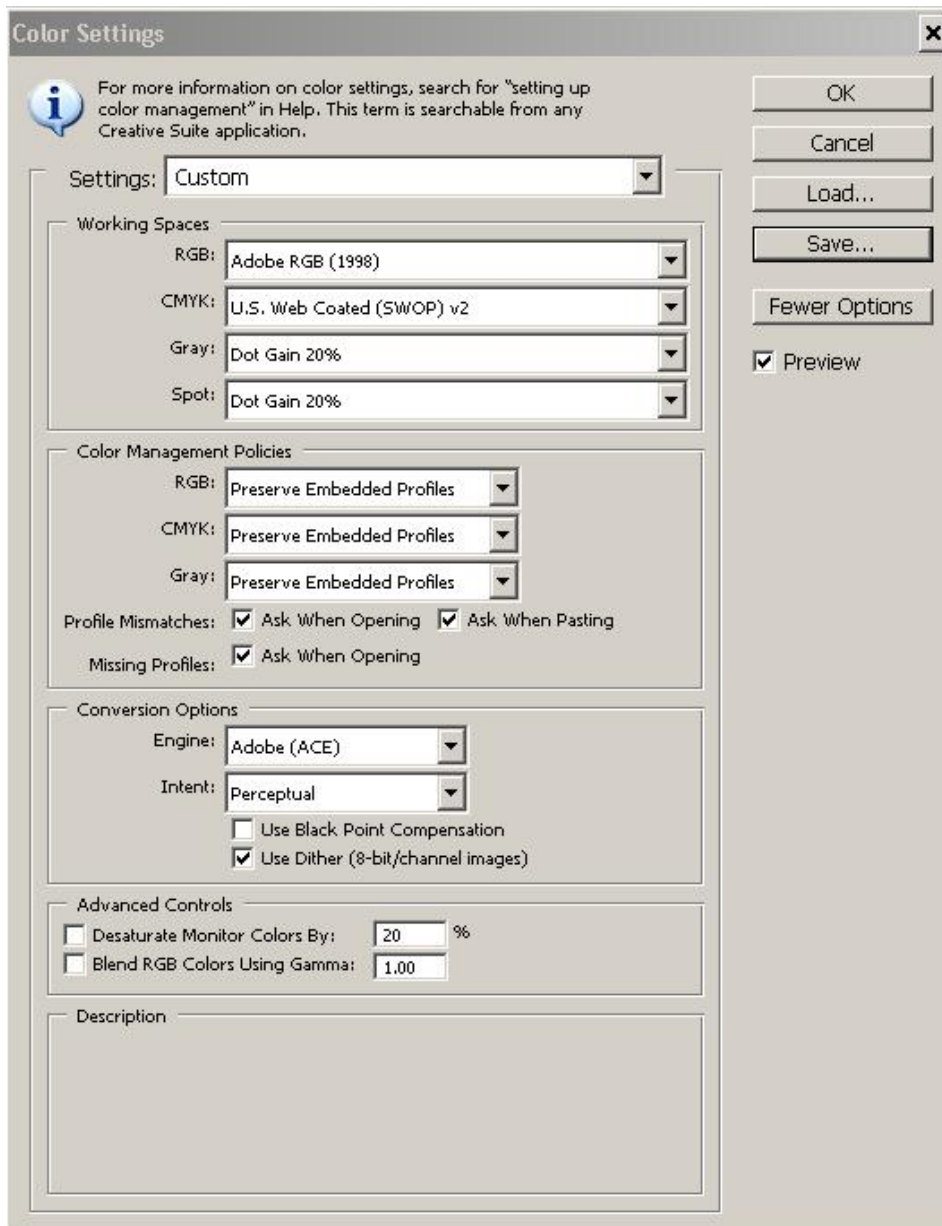
These instructions apply in general to all printers supported by Kodak through these custom ICC profiles, and assume that users have a working knowledge of printer driver software. Printer product support is available from your printer's user manual or from the printer manufacturer's website.

Kodak provides custom profiles for its KODAK PROFESSIONAL Inkjet Photo Paper to help ensure optimum color and image quality for its professional and advanced amateur customers. These are output profiles, optimized for specific inkjet printers across a variety of input sources, but should not be expected to correct for all variations in image capture quality and input source profiles.

Step 1: Installing Profiles and Configuring the Color Settings

The first step is to download the ICC profile specific to your printer and KODAK PROFESSIONAL Inkjet Photo Paper. The list of supported printers and the downloadable profiles are found at www.kodak.com/go/proinkjet. For WINDOWS 2000, the downloaded file must be placed in the Winnt/System32/Spool/Drivers/Color folder. For WINDOWS XP, it must be placed in the Windows/System32/Spool/Drivers/Color folder. Once put in the proper place, the profile is now ready to use and will always be available.

After launching the PHOTOSHOP Software application, you should configure your color settings by selecting **Color Settings...** from the **Edit** drop-down menu. Carefully select the settings to exactly match what is shown below, and click **OK**.



Step 2: Opening the Image File

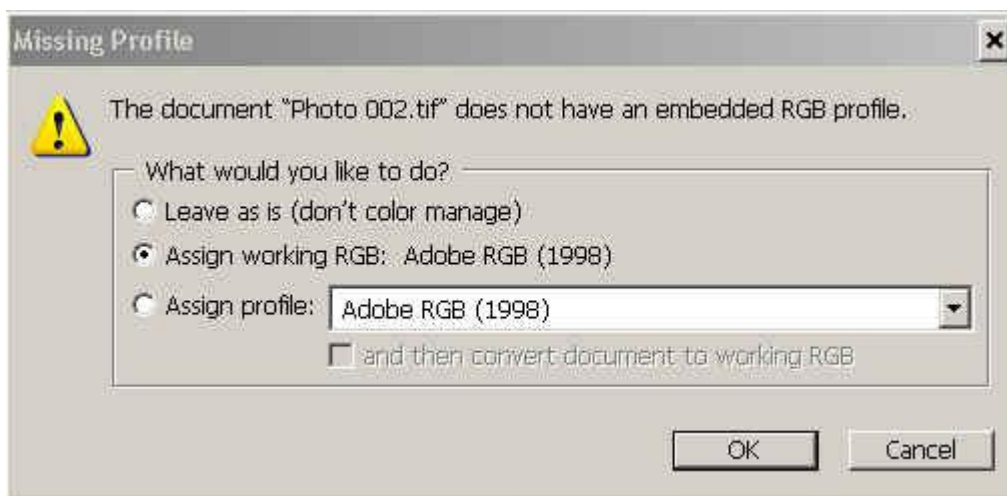
The next step is to open your image file within PHOTOSHOP Software. In cases where the image has a profile matching your color settings chosen in Step 1, the image file will be opened. Otherwise, you may see the following warning about a mismatch between the file's embedded profile and the RGB working space.



We normally recommend selecting **“Use the embedded profile (instead of the working space)”**. Click on **OK** and your file will be opened into PHOTOSHOP Software.

Note: If your normal workflow involves using something other than the embedded profile, you may select **“Convert document’s colors to the working space”**. See the Adobe documentation for more details regarding the conversion of working spaces.

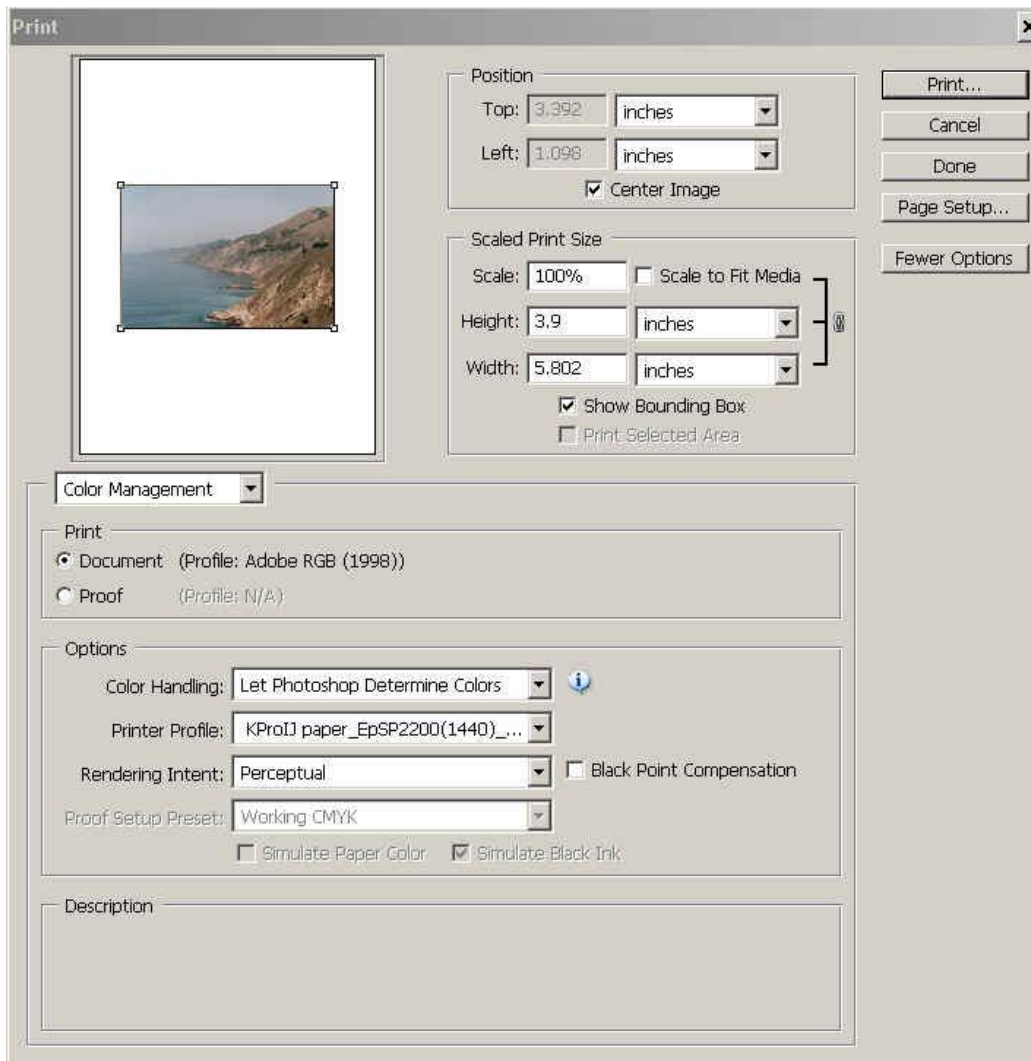
In cases when a file is opened that does not have a profile, the following dialog box appears:



In most instances, selecting **“Assign working RGB: Adobe RGB (1998)”** is recommended. If the intended profile is known exactly, it can be assigned using the **“Assign profile:”** selection. Click on **OK** and your file will be opened into PHOTOSHOP Software. At this point, any resizing, cropping and color editing can be performed on the image.

Step 3: Applying the Printer Driver Settings and Printing

The final step is to print the image. This is done through the **Print with Preview** (or **Ctrl+P**) dialog. Select **“Color Management”**. Under **“Color Handling”**, select **“Let Photoshop Determine Colors”** and under **“Printer Profile”**, use the pull-down menu to select the custom profile downloaded and installed in Step 1. In this example, the profile shown is for the **EPSON Stylus Photo 2200**. The **Rendering Intent** should be set to **“Perceptual”** and **Black Point Compensation** should be **“Off”**.



Clicking on "Print" and the associated "Setup" or "Properties" dialog will access the printer driver. At this point, the settings and options in the driver should be carefully set to match those also provided for your printer on the same download page of Kodak's website where you obtained the profile.

Note: The ICC profile provided for KODAK PROFESSIONAL Inkjet Photo Paper and your printer was built for this paper, printer and ink combination, using the printer driver settings supplied with the profile. Failure to set up the driver exactly as recommended for use with this profile will result in non-optimal color and image quality.

After applying the recommended driver settings, click on "Print" to initiate printing.