

KODAK PROFESSIONAL 8657 Thermal Printer

Export Module for
ADOBE PHOTOSHOP Software and
KODAK DIGITAL SCIENCE™ Calibration
Utility Software for MACINTOSH and
MICROSOFT Windows

User's Guide

Part No. 3H0595

Contents

Introduction	1-1
Job Scheduling.....	1-2
Communication Channels	1-2
Accessing the Export Module.....	1-3
Installing the Software	2-1
System Requirements for Windows	2-1
Hardware.....	2-1
Software	2-1
System Requirements for Macintosh	2-3
Hardware.....	2-3
Software	2-3
Installing the Software on Macintosh Systems.....	2-4
Installation Methods	2-5
Easy Install Procedure	2-6
Custom Install Procedure for Macintosh	2-8
Removing the Software	2-9
Installing the Software on Windows Systems	2-10
Dialog Boxes	3-1
Export Module Dialog Box.....	3-2
Button and Field Descriptions	3-2
Select an 8657 Printer Dialog Box	3-6
Button and Field Descriptions	3-6
8657 Printer Dialog Box	3-7
Button and Field Descriptions	3-7
Printer Status Dialog Box	3-8
Button and Field Descriptions	3-8

Error Messages	4-1
Appendix A: About Printer Tables	A-1
Additive and Subtractive Color	A-1
Standard Tables	A-2
Custom RGB Windows Tables	A-2
Custom RGB Macintosh Tables	A-3
Creating New Printer Tables.....	A-3
Appendix B: Getting Additional Help	B-1
Asia/Pacific Region Helpline Numbers	B-1
European Helpline Numbers.....	B-2
Appendix C: About SCSI Connection	C-1
Windows Systems	C-1
Macintosh Systems.....	C-2
Appendix D: Changing the Network Name on Macintosh for the 8657 Printer	D-1
Changing the Network Name for the 8657 Printer.....	D-1
Index	

1. Introduction

The Kodak Professional 8657 thermal printer export module for Adobe Photoshop software and Kodak Digital Science calibration utility software for Macintosh and Microsoft windows (export module) allows you to print from within Adobe Photoshop (Photoshop) using the Kodak Professional 8657 thermal printer (8657 printer). This guide assumes that you are an experienced computer user who understands how to install software applications.

If you have questions about the 8657 thermal printer, the retailer where you purchased the printer may be able to answer them. You can also visit the Kodak Web site at <http://www.Kodak.com>.

To download the most recent export module, access the Kodak Web site and use the path: Service & Support/Download Software and Drivers for KODAK Products/Dye Sub Printer Drivers and Calibration Software.

The export module is a plug-in for Photoshop, an image editing program. Since the export module runs from within Photoshop, you can use Photoshop's image processing functions before you print.

The export module allows you to:

- Scale an image
- Reprint the last image sent to the printer
- Print in landscape or portrait mode
- Apply print sharpening
- Specify printer tables to perform custom color rendering
- Specify XtraLife ribbon to protect prints
- Center an image on the page
- Create a mirror image

Job Scheduling

The number of jobs that can be queued to the printer at one time is dependent on the available memory in the printer. If large image files are sent, fewer jobs can be processed. Installing optional memory in the printer increases the number of jobs that can be processed. This is described in the user's guide for the Kodak Professional 8657 thermal printer.

The other factor impacting job scheduling is the printer's network configuration. When the printer is connected through more than one port, the printer polls the ports in a round-robin method. The position of the ports in the list impacts the order in which jobs are processed.

Communication Channels

Your computer can print to the 8657 printer through a SCSI or parallel connection or through an Ethernet connection if the optional Network Interface Card is installed in the printer. Refer to the user's guide for the Kodak Network Interface Card for more information about network connectivity.

Accessing the Export Module

To access the export module:

NOTE: The illustrations in this chapter show Macintosh system dialog boxes. Except where noted, the dialog boxes for Windows applications are similar and have identical functionality.

1. Open Photoshop.
2. Open an image file.

NOTE: You cannot access the export module without opening an image file.

3. From the File menu, select “Export” and then “Kodak Professional 8657 thermal printer”.

For Macintosh, the first time you access the export module, the dialog box below appears requesting that you select a printer.

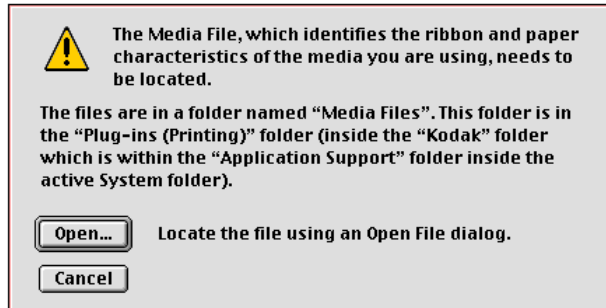


For Windows, the export module automatically selects a default printer.

4. For Macintosh, select the correct printer. If the printer:
 - has a network connection to your host computer, click on *Network*. Select the correct printer in the dialog box that opens. Click on *OK*.
 - has a SCSI connection to your host computer, click on the radio button for the correct printer.
5. Click on *OK* in the Select an 8657 printer dialog box.

NOTE: The export module recognizes other Kodak printers in the Select a Kodak 8657 Printer list. If the printer you selected was not a valid 8657 printer, a Selection Error dialog box appears. Click on *OK*, and select a valid 8657 printer.

A dialog box may also appear asking you to locate the Media File. The Macintosh dialog box is shown below.



6. Click *Open* in the dialog box.
An open file dialog box appears.

7. For Macintosh:

Select:

- "System Folder"
- "Application Support"
- "Kodak"
- "Plug-ins" (Printing)
- "Media Files"

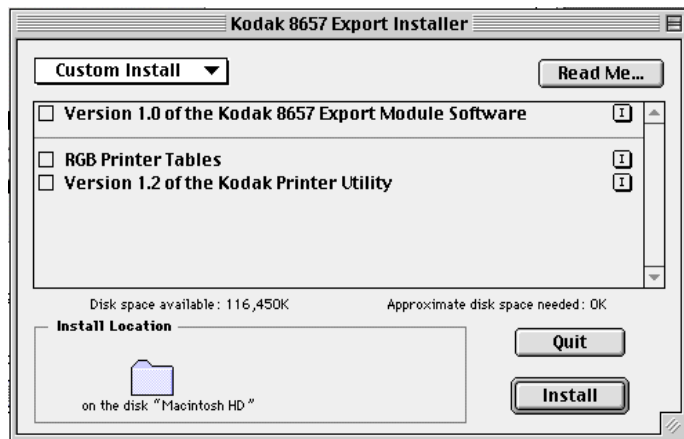
For Windows:

- Locate the Media File in the Plug-ins folder within Photoshop.
- Locate the "MEDFILES" folder.

8. Select the 8657 media file.

9. Click on *Open*.

The Kodak Professional 8657 thermal printer dialog box opens.



Refer to the chapter "Dialog Boxes" for descriptions of the dialog boxes in the export module.

2. Installing the Software

System Requirements for Windows

Hardware

The following hardware is recommended to load and use the Kodak Professional 8657 thermal printer export module:

- 80486 or higher processor
- minimum of 12 MB of RAM
- color monitor with a minimum monitor resolution of 640 x 480 pixels
- CD-ROM drive
- an available LPT port, SCSI host adapter, or network connection

NOTE: SCSI communications are enabled only if a SCSI host adapter board is installed in your PC.

Software

Your PC must be installed with:

- Windows 95 or Windows NT 4.0 (workstation or server)
- Photoshop version 3.0.5 or later

Requirements for SCSI-Connected Installations

- an Adaptec SCSI host adapter board

NOTE: Kodak tested the AHA 1542 and 2940 boards. Other cards may work but have not been tested. Fast, wide, and ultra are not supported. These features must be disabled on the SCSI host adaptor board for the SCSI ID to which the printer is assigned. Refer to the documentation that came with the adapter board for instructions on disabling these features.

- a SCSI cable
- a SCSI terminator
- Adaptec EZ-SCSI Software. This software is commonly provided with ADAPTEC SCSI host adapter boards when they are purchased. The supplier of your board should be able to provide the software if you do not have it, or you can purchase it through Adaptec directly.

NOTE: Windows 4.0 requires EZ-SCSI 4.01b.

Refer to Appendix C: "About SCSI Connection," for more information.

System Requirements for Macintosh

Hardware

The following hardware is recommended to use the export module:

- 68040 or higher processor
- minimum of 8 MB of RAM (required by Photoshop)
- hard disk space of at least three times your image size
- a special Apple SCSI terminator with an external SCSI disk drive or another peripheral device if you are using a Macintosh IIx

OR

a standard SCSI terminator if you are not using a Macintosh IIx computer to daisy-chain your external disk drive or another peripheral with the 8657 printer

Software

Your Macintosh system must be installed with:

- Apple System, version 7.5.5 or later
- Adobe Photoshop version 3.0.4 or later

Installing the Software on Macintosh Systems

The following steps describe how to install the export module on your Macintosh system:

1. Insert the export module CD in the CD-ROM drive. Double-click on the icon for the CD.
2. Double-click on the Export folder.
3. Double-click on the icon for the *Kodak 8657 Export Installer*.

The splash screen for the export module appears.



4. Click on the screen.

The license agreement window appears.

5. If you accept the terms of the license agreement, click on *Accept*.

The Installer dialog box appears.



Installation Methods

You can install the software by using either the Easy Install procedure or the Custom Install procedure.

Easy Install—clicking on the *Install* button when *Easy Install* appears in the upper-left corner of the Install dialog box automatically installs the export module, the RGB Printer Tables, and the Kodak printer utility.

Custom Install—selecting the *Custom Install* from the installation drop-down box accesses the Custom Install dialog box. The Custom Install allows you to individually install the export module, the RGB Printer Tables, and the Kodak printer utility. A Remove option also appears in the installation drop-down box. Refer to “Removing the Software” for more information.

Easy Install Procedure

The following steps describe the Easy Install procedure.

1. Make sure that Easy Install appears in the upper-left corner of the Install dialog box.



2. Click on *Install*.

The software is installed and the Install Alias dialog box appears.



3. If you wish to install an alias of the export module in your Adobe Photoshop Plug-ins folder, click on *Install Alias*.

Messages indicating that the software is installing appear.

When installation is complete, the following dialog box appears.



4. Click on *Quit* to return to your desktop, or click on *Continue* to do additional installations.

Custom Install Procedure for Macintosh

The following steps describe the Custom Install procedure for Macintosh.

1. From the Installation drop-down box select "Custom Install".

The dialog box changes to look like this.



2. Select the software you want to install.
3. Click on *Install*.

The selected software is installed. The Install Alias dialog box appears.



4. If you wish to install an alias of the export module in your Adobe Photoshop Plug-ins folder, click on *Install Alias*.

A message indicating that the software is installing appears.

A prompt appears when the installation finishes.

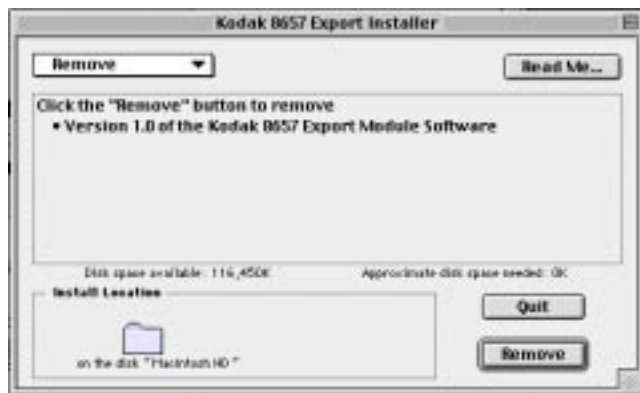


5. Click on *Quit* to return to your desktop, or click on *Continue* to do additional installations.

Removing the Software

You can use the Install dialog box to remove the export module software from your system. The following steps detail removing the software.

1. From the Installation drop-down box, select "Remove".



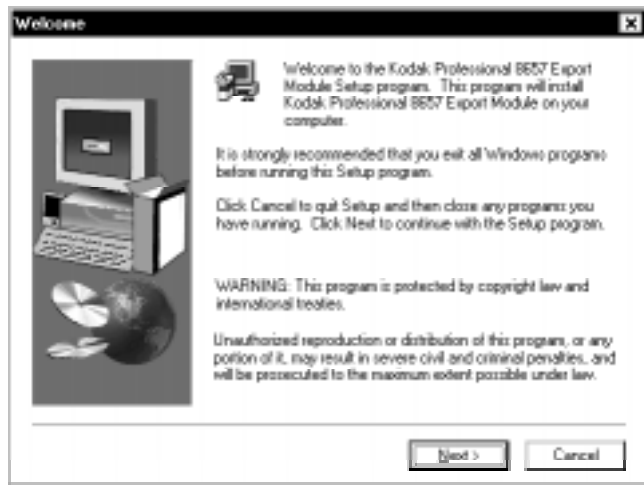
2. Click on *Remove*.
3. Click on *Quit* to return to your desktop.

Installing the Software on Windows Systems

The following steps describe the Install procedure for Windows.

1. Start the installation program from "Setup".

The Welcome Screen appears.



2. Click on *Next*.

The Software License Agreement Screen appears.

3. Click on *Yes* to accept the terms of the license agreement.

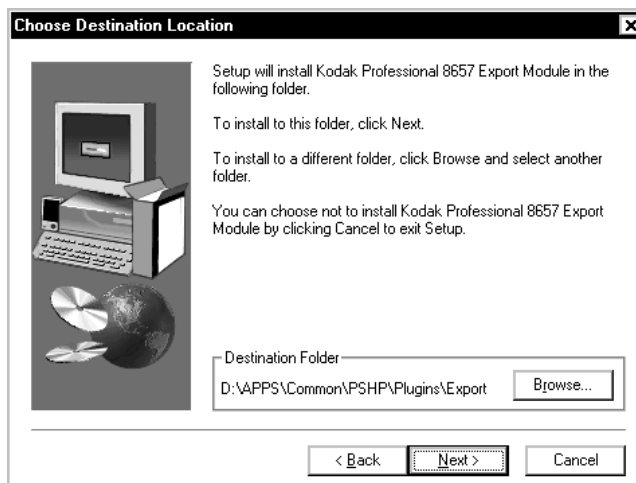
The Choose Printing, Calibrating, or Both screen appears.



The installation path presented in the next screen depends on which of the radio buttons is selected on this screen.

4. Select the correct radio button, and click on *Next*.

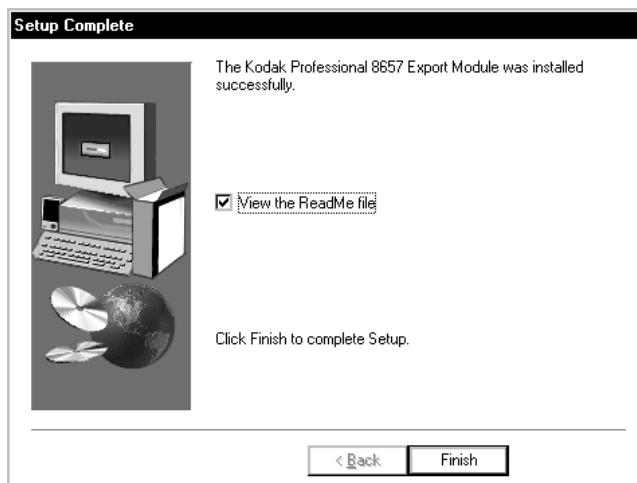
The Choose Destination Screen appears.



The installer copies the export module, printer tables, media file, and the Help file to the path defined on this screen.

5. Click on *Next*.

The Status screen appears; and when the installation is complete, the Setup Complete screen appears.



6. Click on *Finish*.

3. Dialog Boxes

The dialog boxes shown and described in this chapter are used in the Kodak Professional 8657 thermal printer export module for Adobe Photoshop software and Kodak Digital Science calibration utility software for Macintosh and Microsoft windows (export module).

Descriptions are given for buttons and fields unique to the export module. Buttons and fields common to most Macintosh and Windows applications are not described.

The illustrations in this chapter show Macintosh system dialog boxes. Except where noted, the dialog boxes for Windows applications are similar and have identical functionality.

NOTE: Invalid options are dimmed for Macintosh systems and removed from the options list for Windows systems.

Error messages appear when invalid combinations of print mode and ribbon type or incorrect print material are selected.

When the export module is used for the first time, the error message "Media File is Missing" appears. See "Error Messages" for more information.

Export Module Dialog Box

The Kodak Professional 8657 thermal printer allows you to control printer features by choosing from available options.



Button and Field Descriptions

Printer—the *Printer* area allows you to specify a printer port, view printer status, and reprint images.

Select—opens the Select an 8657 printer dialog box. See the “Select an 8657 Printer Dialog Box” section in this chapter for more information.

Status—opens the Printer Status dialog box. See the “Printer Status Dialog Box” section in this chapter for more information.

Reprint—reprints the last image sent to the printer. The last image sent to the printer remains in the buffer until the printer is shut off, the next image is sent, or the SCSI bus is reset.

When the *Reprint* box is selected, the options in the *Media*, *Layout*, and *Image Processing* group boxes are grayed out and cannot be selected.

Media—the *Media* area allows you to specify the print mode, paper size, and XtraLife lamination options.

NOTE: If the wrong media is loaded in the printer after the job has been received and processed, error messages appear on the printer's display panel.

Print Mode—displays Paper as the media.

Size—displays a paper size of 7 x 8.5 in.

The imageable area of the media size is provided in the following table.

Media Size	Image Size (in Inches)	Image Size (in Millimeters)	Image Size (in Pixels)
7 x 8.5 in. 179 x 216 mm	5 x 8.0 in.	128 x 204 mm	1500 x 2400

XtraLife—applies XtraLife lamination to the print. XtraLife ribbon must be loaded in the printer to have this option applied.

Image Processing—allows you to manipulate the sharpness of an image and to select an appropriate printer table.

Print Sharpening—allows you to improve the sharpness of continuous tone or photographic images. Available options include “None”, “Normal”, and “High”.

Selecting “Normal” or “High” enhances edge definition of images to varying degrees, but it also increases processing time.

Printer Table—allows you to select a printer table which produces the closest possible match between the image colors displayed on your monitor and the printed colors of that image. Available options are:

None—use this option if you are using color management software in conjunction with Photoshop.

Default—use this option to select correction values appropriate for most print jobs.

Selected—displays the name of the current printer table.

Select—opens a standard file selection dialog box which allows you to select from a list of printer tables.

NOTE: On Windows systems, the list of printer tables is accessed by the Load table button. The *Printer Table* list box has the same functionality as the Macintosh version. The following is an example of the Image Processing section of the 8657 Printer Dialog Box for Windows.



See Appendix A: "About Printer Tables," for more information.

Layout—allows you to manipulate orientation, centering, mirroring, and scaling of the image.

Orientation—allows you to manipulate orientation of the image on the page. Available options include:

Automatic—for Windows, automatically orients the image on the page.

Portrait—vertically orients the image on the page.

Landscape—horizontally orients the image on the page.

Scale—scales images to fit or fill the entire page. You may indicate the percentage that images are to be scaled in the text box. Available options include:

To Fit Page—images that are larger or smaller than the page are scaled to fit the page without cropping or distorting the image.

To Fill Page—images that are larger or smaller than the size of the current media are cropped in order to fill the page.

By Size—images are scaled based on the image width and height. For example, scaling an 8 x 10 in. image by 50% prints a 4 x 5 in. image.

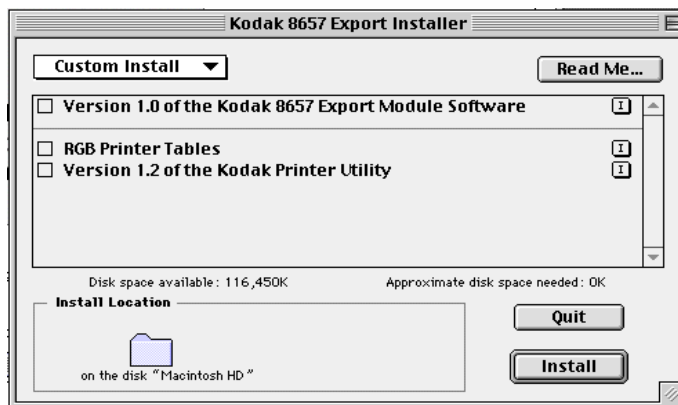
By Pixels—images are scaled based on the number of pixels in the image width and height. For example, scaling an 800 x 1000 pixel image by 200% prints an 1600 x 2000 pixel image.

Center—centers the image on the page. If left unchecked, images are positioned in the upper left corner of the page.

Mirror—flips the image left to right on the page, producing a mirror image.

Select an 8657 Printer Dialog Box

Access the Select an 8657 Printer dialog box by clicking the *Select* button in the 8657 Printer dialog box. This dialog box displays the location (on Macintosh) or ports (on Windows) and the 8657 printers that are connected (either directly or by a network) to them. The dialog box also indicates the print media and ribbon type currently loaded in the printer.



Button and Field Descriptions

Update—refreshes the screen and replaces any information that has changed.

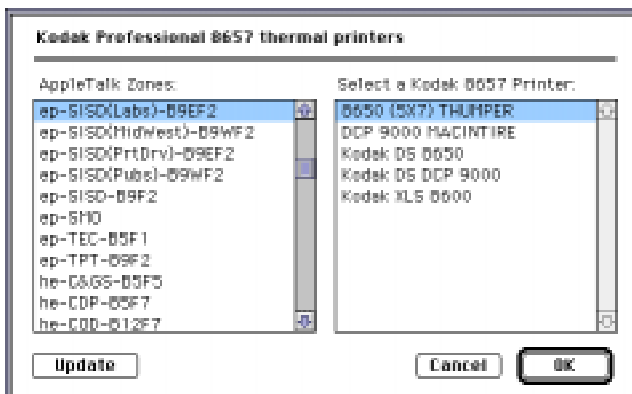
Network—for Macintosh systems network printing is only available when the optional Network Interface Card is installed on the printer and the printer is connected to an Ethernet network. When you select this button, the Kodak Professional 8657 Printers dialog box opens. See the “8657 Printers Dialog Box” section in this chapter for more information.

For Windows systems this option is only available when the operating system is Windows 95. When you select this button, the network’s dialog box opens.

8657 Printer Dialog Box

Access the Kodak Professional 8657 thermal printer dialog box by clicking the *Network* button on the Select an 8657 Printer dialog box.

This dialog box allows you to select from the available AppleTalk zones so that you can choose a printer.



Button and Field Descriptions

Update—refreshes the screen and replaces any information that has changed.

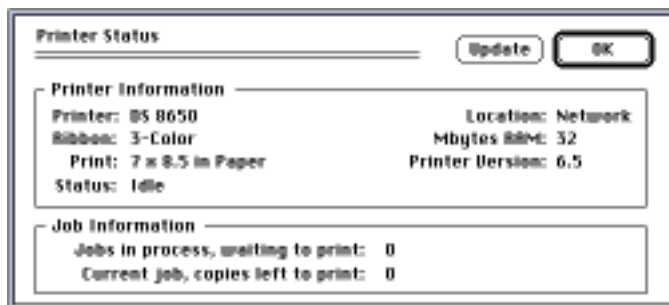
OK—closes the dialog box and indicates that the printer you have highlighted in the Select a Kodak 8657 Printer list box should be the active printer. *OK* can be selected only when a printer is highlighted

NOTE: The export module recognizes other Kodak printers in the Select a Kodak 8657 Printer list. If the printer you selected was not a valid 8657 printer, a Selection Error dialog box appears. Click on *OK*, and select a valid 8657 printer.

Printer Status Dialog Box

Access the Printer Status dialog box by selecting the *Status* button on the 8657 printer dialog box. The information displayed corresponds to the printer that is currently selected for printing.

NOTE: On Windows, the status button is only enabled if a SCSI port is being used.



Button and Field Descriptions

Printer Information—describes the state of the selected printer. Information includes the printer model, loaded ribbon and print media, printer status (Idle, Printing, or Busy), printer location, amount of RAM installed on your system, and the printer version number.

Job Information—lists the number of jobs being processed and number of copies left to print of the current job.

4. Error Messages

Many of the error messages displayed by the Kodak Professional 8657 thermal printer export module for Adobe Photoshop software and Kodak Digital Science calibration utility software for Macintosh and Microsoft windows (export module) are self-explanatory. The following list provides additional information for frequently encountered messages.

If you do not find a displayed error message in the list, refer to your Macintosh, Windows, or Photoshop documentation.

Error Message	Solution
Media File is Missing	For Macintosh, select: <ul style="list-style-type: none">• “System Folder”• “Application Support”• “Kodak”• “Plug-ins”• “Media Files” For Windows: <ul style="list-style-type: none">• locate the Media File in the plug-ins folder within Photoshop• locate the “MEDFILES” folder
Image Mode is invalid! You must convert this image to RGB Color or Grayscale in Photoshop before it can be printed, or you can reprint the image currently stored in the printer.	Change the Photoshop mode to print the file.
The file is too large for the Kodak 8657 printer! Resize the image in Photoshop before printing. The maximum size is 120 MB.	Make the image smaller to print the file. To make the image smaller, select <i>Image Size</i> from the <i>Image</i> menu, and enter a smaller height or width.
AppleTalk is inactive. Set AppleTalk to “Active” in the Chooser. (Only on Macintosh systems.)	Indicates AppleTalk is not running. Open the Chooser and turn AppleTalk on.

Error Messages

Error Message	Solution
The printer cannot be found! Check connections, make sure the printer is turned on, or select another 8657 printer.	Indicates that the printer is not connected or turned on.
The printer cannot scale the image (up or down) enough to completely fit (fill) the page! The export module will set the scaling to the limit of the printer.	Indicates the scaling limits in the printer were exceeded. The export module will readjust the scaling to fit the printer.
The select Kodak printer on "X" is busy! Jobs in process, waiting to print: "Y" Current job, copies to print: "Z"	Indicates the printer is busy and informs on job status and jobs in queue. Dialog box closes when the printer becomes available.
The printer port will be set to LPT1. Press the <i>Select</i> button on the Print dialog box to select another port. (Only appears in Windows versions)	Appears the first time the export module is run or if the previously selected SCSI printer is no longer available.
Various Media Mismatch Messages	The requested print media does not match the media loaded in the printer. Follow the instructions in the message to resolve the problem.

For other errors, check all connections and make sure the printer display shows the READY prompt. If the problem persists, restart the printer and the computer. If you still have trouble, try reinstalling the export module.

Appendix A: About Printer Tables

Printer tables are powerful tools for precisely adjusting the print's color and characteristics. The tables allow you to obtain the closest possible match between a displayed image and a print of that image. Kodak TableMaker software (TableMaker software), allows you to create new tables or modify existing tables. TableMaker software only works with RGB tables.

Additive and Subtractive Color

Displayed and printed images have different appearances due to the nature of the processes used to produce the colors on monitors and in prints.

A monitor uses an additive color process to produce a screen image. Red, green, and blue light from the color phosphors in the tube are added together to produce white light. Various mixtures of the three colors produce a variety of colors. A color printer uses a subtractive color process, where ambient light passes through layers of color dyes (cyan, magenta, yellow, and sometimes black), reflects off a white paper base, and passes back through the color dye layers to your eyes. The dyes produce color by absorbing portions of the color spectrum from the light striking the surface of the print. The perceived color of a print is also strongly influenced by the type and intensity of the light in which it is viewed.

A color gamut is the range of visible colors that can be produced by a specific set of colors (such as red, blue, and green, or cyan, magenta, yellow, and black). Monitors, scanners, and color prints also have different color gamuts. Many different CRT phosphors and color dyes are available, and each produces a different range of colors called gamuts. Phosphors generally produce a wider color gamut than photographic printing dyes, particularly in the blue and green regions. However, some printable colors cannot be displayed on a typical monitor.

Standard Tables

Each printer table is named according to its correction formula. There are 45 standard RGB tables. The standard printer tables consist of combinations from one of the available gamma correction values (1.0, 1.2, 1.4, 1.6, 1.8, 2.0, 2.2, 2.5, 2.8) and one of the available black level values (-40, -30, -20, -10, 0). For example, the printer table SG16BN30 has a gamma correction value of 1.6 and a black level value of -30.

The standard tables are all set for a hue shift of 0°, a saturation level of 100%, and an automatic contrast calculation.

The default table for the export module is gamma 2.0, black level -20. Choosing a black level of -10 or 0 lightens a print and helps to bring out details in and shadow areas. A black level of -30 or -40 darkens a print.

Custom RGB Windows Tables

Four custom tables are included with the Windows version of the export module.

SLINEAR.TBL—does not modify the digital color data it receives from the application. It outputs the same values it receives, which allows you to use calibrated digital color data directly from a color calibration program.

SYELLOW.TBL—includes a color matrix that modifies the yellow digital image data it receives. These modified values produce a lighter shade of yellow, which is better suited for graphic arts applications.

SPHOTOCD.TBL—obtains maximum image quality from Photo CD images that were opened using the RGB video metric.

SDEFAULT.TBL—uses the same correction values as the XLS Default selection and the SG20BN20.TBL printer table.

Custom RGB Macintosh Tables

Four custom tables are included with the Macintosh version of the export module. They are stored in a folder named Custom Tables.

Linear Table—does not modify the digital color data it receives from the application. It outputs the same values it receives, which allows you to use calibrated digital color data directly from a color calibration program.

Graphic Arts Yellow Table—includes a color matrix that modifies the yellow digital image data it receives. These modified values produce a lighter shade of yellow, which is better suited for graphic arts applications.

Photo CD Table—obtains maximum image quality from Photo CD images that were opened using the RGB video metric.

PostScript Level 1 Table—achieves results equivalent to the Kodak Digital Science™ 8650 PS PostScript level 1 color rendering path.

Creating New Printer Tables

The printer tables supplied with the export module should be sufficient for most of your printing needs. However, if you have a special printing requirement that cannot be met by an existing printer table, you can order Kodak TableMaker software to create new tables for RGB printing.

Contact your Kodak dealer to order one of the following versions of the Kodak Tablemaker software:

- Macintosh, order catalog # 824 8833
- Windows, order catalog # 840 4998

Appendix B: Getting Additional Help

If you have questions about the Kodak Professional 8657 thermal printer (8657 printer), the retailer where you purchased the printer may be able to answer them. You can also visit the Kodak Web site at <http://www.Kodak.com>.

You may also call for technical support at 1-800-235-6325 between 9:00 a.m. and 8:00 p.m. Eastern Standard Time on regular business days if you have questions about:

- your warranty
- supplies
- service
- other Kodak products
- software/printer interaction
- setting up or operating the printer

To download the most recent export module, access the Kodak Web site and use the path: Service & Support/Download Software and Drivers for KODAK Products/Dye Sub Printer Drivers and Calibration Software.

Asia/Pacific Region Helpline Numbers

Country	Country code	Helpline number
Australia	61	3 353 2173
Hong Kong	85	2 5649387
Indonesia	62	21 430 4527
Korea	82	02 708 5471 4
Malaysia	60	3 757 2722
Philippines	63	2 816 67 18
Singapore	65	4736611
Thailand	66	2 271 3040 x396
Taiwan	88	6 2 893 8234

European Helpline Numbers

Country	Country code	Helpline number
Belgium	32	02 2632400
Denmark	45	43 717111
Finland	358	90 87071
France	33	1 4989 0083
Germany	49	0711 406 5561
Italy	39	02 66028454
Netherlands	31	03405 99704
Norway	47	02 818181
Spain	34	91 6267100
Sweden	46	08 58023663
UK	44	044261122 Ext. 44239

Appendix C: About SCSI Connection

A SCSI terminator is included with the Kodak Professional 8657 thermal printer. You must obtain the proper cabling required for your configuration and system from your printer retailer or distributor.

The two SCSI connectors on the back of the printer are female submini, 50-pin SCSI II connectors.

Windows Systems

To connect the Kodak Professional 8657 thermal printer (8657 printer) directly to your computer (or to daisy-chain the printer through an external SCSI device), perform the following steps.

1. Set the SCSI device number using the 8657 printer's display panel.

The 8657 printer is set at the factory for SCSI ID 5. If you need to change the SCSI ID, refer to the user's guide for the Kodak Professional 8657 thermal printer for instructions about setting the SCSI device number.

2. Turn off all equipment before connecting or disconnecting any equipment from the SCSI bus.
3. Install the SCSI host adapter board in the computer.
4. Attach a SCSI cable appropriate to your equipment's configuration.
5. Attach a SCSI terminator.

NOTE: Some equipment is internally terminated. Refer to the equipment documentation for details.

6. Turn on the 8657 printer and when the printer is ready, turn on the computer.

NOTE: If the New Hardware dialog box is displayed by Windows 95 the first time your PC is restarted, choose NEXT to let Windows search for a driver. Then choose FINISH after Windows is unable to find a driver. The printer utilizes a Photoshop export module rather than a SCSI driver.

7. For Windows NT 4.0 only, run the Adaptec EZ-SCSI software install program to install the software on your system.

Instructions for installation are included in the Adaptec EZ-SCSI User's Manual.

Macintosh Systems

To connect the 8657 printer directly to your Macintosh computer (or to daisy-chain the printer with an external SCSI device), perform the following steps.

IMPORTANT: If you are using a Macintosh IIx computer, you must install a special terminator provided by Apple Computer; or unpredictable results can occur.

1. Set the SCSI device number using the 8657 printer's display panel.

The printer is set at the factory for SCSI ID 5. If you need to change the SCSI ID, refer to the user's guide for the Kodak Professional 8657 thermal printer for instructions about setting the SCSI device number.

2. Turn off all equipment before plugging or unplugging equipment on the SCSI bus.
3. Attach a SCSI cable appropriate to your equipment's configuration.
4. Attach the SCSI terminator.

NOTE: Some equipment is internally terminated. If you have questions, refer to your equipment documentation.

5. Turn on the 8657 printer and the computer.

Appendix D: Changing the Network Name on Macintosh for the 8657 Printer

Changing the Network Name for the 8657 Printer

The Kodak Printer Utility allows you to change the name of the Kodak Professional 8657 thermal printer (8657 printer) as it is known over an AppleTalk network.

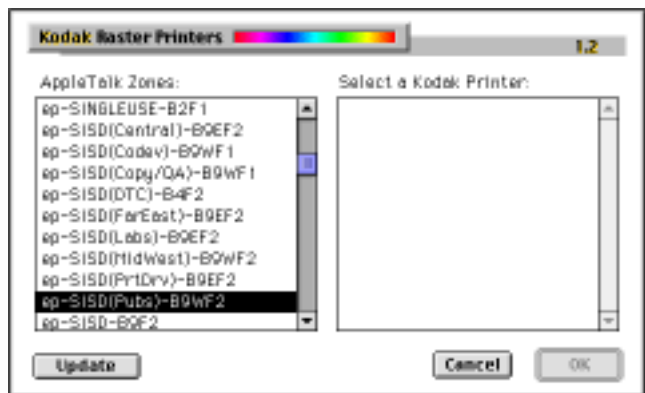
NOTE: The name you specify is the name for the 8657 printer only when it is running in raster mode and only when the 8657 printer is connected to the network through the optional Network Interface Card.

IMPORTANT: This utility must be copied to the hard drive. It does not run correctly from the CD Rom drive.

Refer to the user's and printer driver guides for the Kodak Professional 8657 thermal printer for more information about printer modes and network connectivity.

1. Double-click on the icon for the Kodak printer utility.

If your AppleTalk zone does not contain a Kodak color printer running in raster mode, the following Kodak Raster Printers dialog box appears.



Appendix D: Changing the Network Name on Macintosh for the 8657 Printer

2. From the AppleTalk Zone list box, select the zone of the printer you want to rename.

The Select a Kodak Printer list box displays the printers from that AppleTalk zone.



3. Select the printer you want to rename from the Select a Kodak Printer list box.
4. Click on *OK*.

The Kodak Raster Printers window closes.

Appendix D: Changing the Network Name on Macintosh for the 8657 Printer

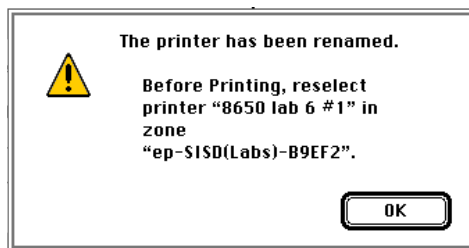
5. From the *Utilities* menu select *Rename Printer*.

A dialog box similar to the following appears.



6. Type the new name for the printer in the New Name text entry box.
7. Click on *Rename*.

A confirmation panel similar to the following appears.



8. Click on *OK*.

The 8657 printer running in raster mode is now renamed to the name you specified.

Index

A

accessing the export module 1-3
Adaptec EZ-SCSI software 2-2, C-2
additive color A-1
AppleTalk
 error messages about 4-1
 zones 3-7, D-1

C

cabling, SCSI
 for Macintosh C-2
 for PC C-1
centering images on the page 3-5
checking the printer's status 3-8
choosing a printer 3-6, 3-7
color gamut A-1
color mode
 error messages about 4-1
communication channels 1-2
cropping images 3-5
Custom remove option
 on Macintosh systems 2-5

D

dialog boxes
 8650 Color Printer 3-2
 8650 Color Printers 3-7
 Kodak Raster Printers D-1, D-2
 Printer Status 3-8
 Rename Printer D-3
 Select an 8650 Color Printer 3-6

E

error messages 4-1–4-2
ethernet network 3-6
export module
 accessing 1-3
 getting additional help B-1
 what it can do 1-1

F

file size
error messages about 4-1

G

gamut, color A-1

H

help, additional
see Appendix B
helpline numbers
Asia/Pacific B-1
European B-2

I

image processing 3-3
Install button
on Macintosh systems 2-5, 2-6
Install dialog
using to remove software from Macintosh systems 2-9
installation
methods for Macintosh systems 2-5
on PC systems 2-1
system requirements on Macintosh systems 2-3
system requirements on PC systems 2-1
Installation procedures
Custom Install
on Macintosh systems 2-8, 2-10
Customize
on Macintosh systems 2-5
Easy Install
on Macintosh systems 2-6

J

job scheduling 1-2
jobs being processed
finding information about 3-8

K

Kodak TableMaker software A-3

L

lamination, Xtra Life 3-3

landscape, page orientation 3-5

M

Macintosh IIcx

 cable, terminator for C-2

media field 3-3

mirroring images 3-5

N

network interface card 3-6, D-1

network name

 changing on Macintosh systems D-1

P

page orientation

 landscape 3-5

 portrait 3-4

paper sizes 3-3

plug-in 1-1

portrait, page orientation 3-4

print mode 3-3

print sharpening 3-3

printer

 finding the version number 3-8

 selecting a 3-6, 3-7

 status 3-8

printer tables

 additive and subtractive color A-1

 creating new A-3

 custom, for Macintosh A-3

 custom, for PC A-2

 Kodak TableMaker software A-3

 printer table button 3-4

 standard A-2

 see Appendix A

Q

queue, printer 1-2

R

RAM, installed 3-8

Removing the Software
from Macintosh systems 2-9

S

scaling images 3-5

SCSI connection. see Appendix C

cabling C-1, C-2

device number C-1, C-2

for Macintosh C-2

for Windows C-1

host adapter board 2-2, C-1

requirements 2-2

SCSI bus C-1, C-2

terminator C-1, C-2

selecting a printer 3-6, 3-7

service B-1

status button 3-2

subtractive color A-1

system version

required for Macintosh systems 2-3

T

technical support B-1

terminator, SCSI

for Macintosh C-2

for PC C-1

V

version number, printer 3-8

W

warranty

 questions about B-1

X

Xtra Life lamination 3-3

EASTMAN KODAK COMPANY
Rochester, New York 14653

KODAK CANADA INC.
Toronto, Ontario M6M 1V3
Canada

Kodak, Digital Science, and the ds
monogram symbol are trademarks of
Eastman Kodak Company.

Adobe® and PostScript® are registered
trademarks of Adobe Systems
Incorporated.

